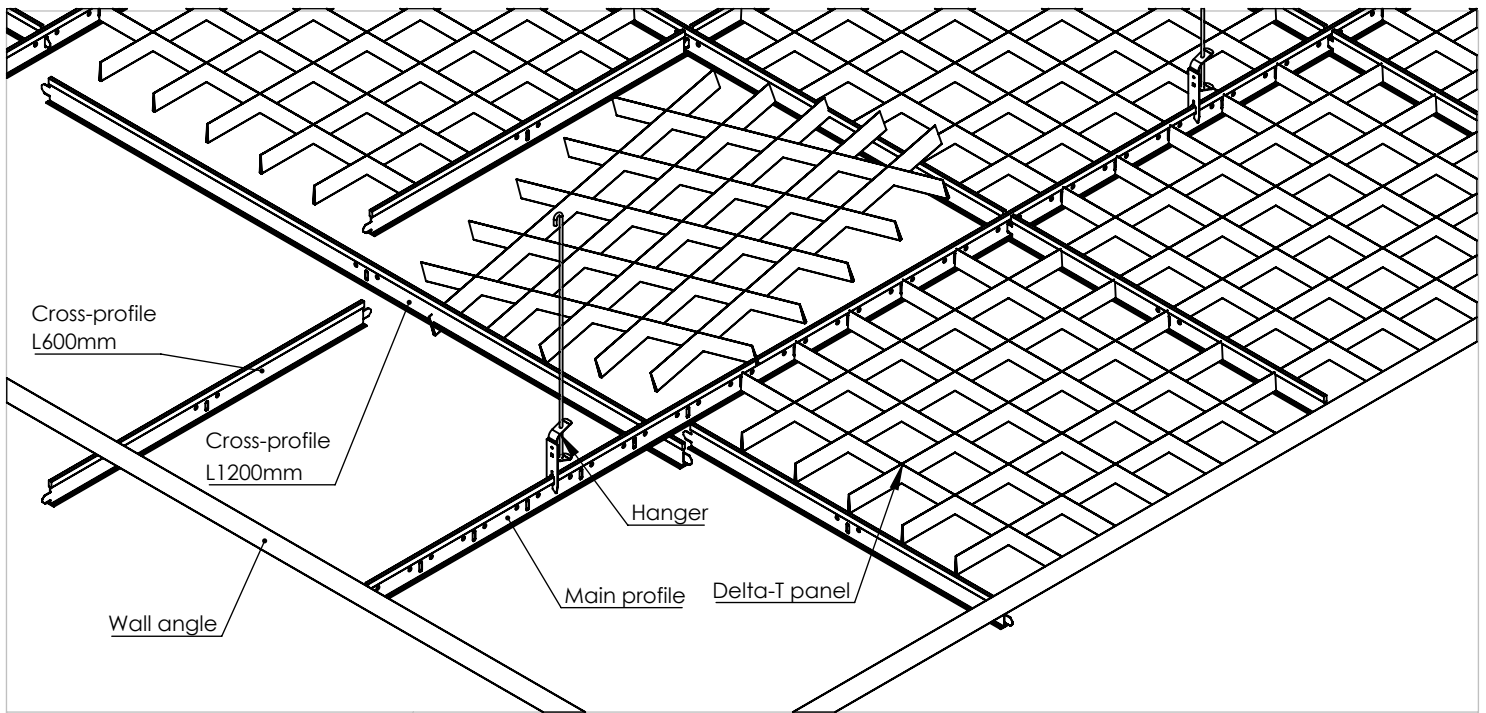


Delta-T system

Open-cell ceiling based on T15 / T24 construction.

- made from oven-paint coated aluminium
- universal - meant for use with standard ceiling suspension construction
- very high degree of light, fumes and fire installation penetration
- rigid and aesthetic , easy to keep clean
- easily accesible overhead instalations
- possible to install lighting fixtures
- quick and easy installation
- possible to incorporate with different types of mineral ceilings as well as in connection with different types of infills
- in any panel dimesnsions and in any cell sizes
- optionally with perforated elements to use with accoustic elements
- wide range of colours

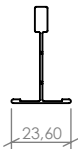


Main profiles

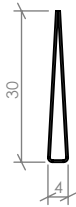
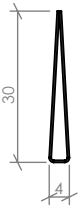
T15



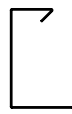
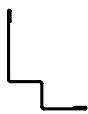
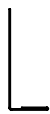
T24



Elements profiles



Wall angles

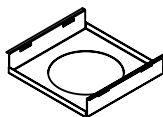
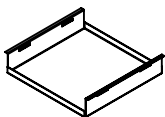


Profil L

Profil W

Profil C

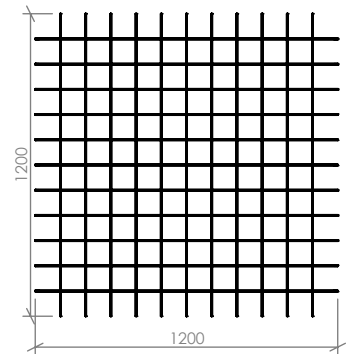
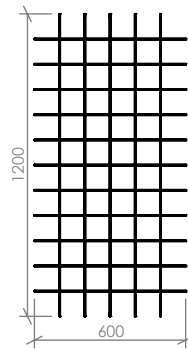
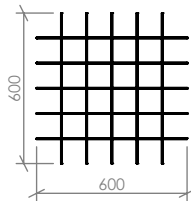
Light fixture plates



full

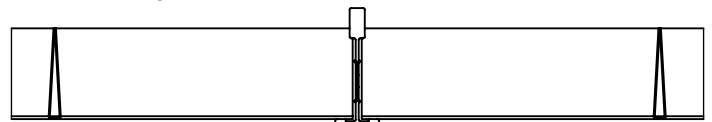
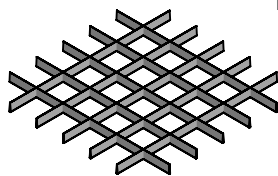
with hole

Standard panels dimensions

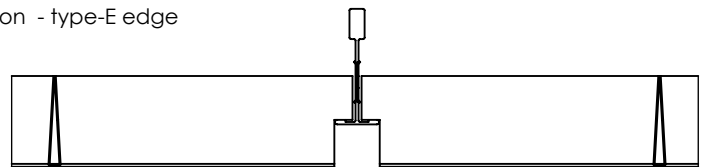
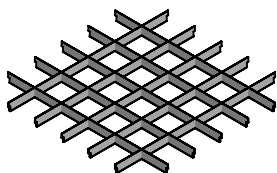


Finish standards

Lay-on - type-A edge



Lay-on - type-E edge



Ceiling parameters

Cell size	Profil T15 Open area %	Profil T24 Open area %	Viewing angle	
			H25	H30
50x50	80,7	78	27°	32°
75x75	85,9	83,2	19°	22°
100x100	88,5	85,7	14°	17°
120x120	89,8	87	12°	13°
150x150	91,1	88,3	9°	10°
200x200	92,4	89,6	7°	8°
300x300	93,7	90,8	4°	5°

MILCARZ

Jacentów 61A
27-580 Sadowie

Tel: +48 15 868 21 28
+48 15 869 26 88

info@pwkrzystof.com.pl

There's a possibility of making non-standard versions and different accessories. In case of questions please contact us.